

HOW TO BRING ABOUT SYSTEMIC CHANGE?

Reflections from the CIDSE Systemic Change Forum - (Leuven, 17-18 April 2018)

SYSTEMIC CRISES ARE
INTERCONNECTED



AND REQUIRE **INTEGRATED**
RESPONSES



TO ACHIEVE
REAL CHANGE...



WE NEED TO ACTIVELY ADDRESS THE CURRENT POWER IMBALANCES AND MAKE SPACE TO LET THOSE MOST AFFECTED BE IN THE CENTER OF THE PROCESS OF CHANGE.



AS SOCIAL JUSTICE ORGANISATIONS, WE NEED TO WORK TOWARDS COLLABORATIONS AND ALLIANCES WHICH ARE TRULY INCLUSIVE AND EQUAL IN NATURE.



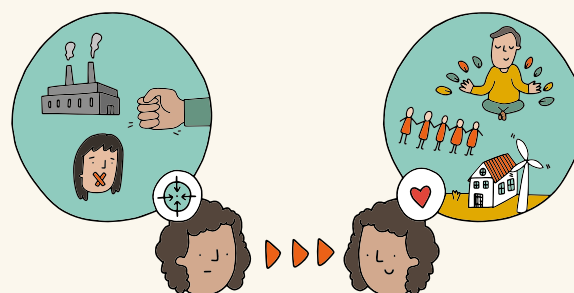
IT IS IMPORTANT TO SUPPORT SOCIAL MOVEMENTS, MAGNIFY THEIR VOICES AND PROTECT THEM FROM VIOLENCE AND CRIMINALISATION.



WE SHOULD TRANSFORM OUR WAY OF THINKING TO FEEL ONE WITH NATURE AND NOT TO VIOLATE ANY ASPECT OF OUR EARTH.



WE SHOULD RETHINK OUR ORGANISATIONAL CULTURES: PAY ATTENTION TO OFFICE BEHAVIOURS AND STRUCTURES AND CARBON FOOTPRINT. CHANGE STARTS WITH US!



THE WAY WE TALK ABOUT OUR PLANET AND SOCIETY IS LOADED WITH IMPLICATIONS THAT AFFECT OUR PERCEPTION. WE NEED NEW IMAGINARIES AND STORIES THAT SERVE AS A BREEDING GROUND FOR CHANGE.

